



CDK LightspeedEVO

ARI Website Integration to Major Unit Inventory

If you have or obtain a website hosted by ARI your major unit inventory entries in Lightspeed are coordinated with ARI and your website from lookup at entry through removing the posting upon sale. After entering a unit in Lightspeed (pg. 2) it can be posted to your ARI website and other listing sites using the ARI Visibilities feature (pg. 3.) You can also select or customize the images used on the ARI site (pg. 4).

To simplify entering your units into Lightspeed inventory you can begin with a search by VIN or by Year/Make/Model. At present the VIN search works only for Powersports Industry information provided via ARI. For RV or marine units use the Year/Make/Model search. To use VIN search, first select the **Unit Type** and in the **Industry** field select *Power Sports* to enable entries in the VIN field. See details on page 2.

When using either the VIN or Year/Make/Model search it pulls the information directly from unit data available via ARI on the web. A successful VIN Search populates the Year, Make, and Model, as well as populating information in the *Website* tab in your inventory record. If you search by Year, Make, Model and choose a matching model in the results, your selection from that lookup populates the *Website* tab information. The information on the *Website* tab in the Lightspeed unit record is what is posted to your inventory list on the website.

Unit inventory records from Lightspeed are not automatically posted to the website; you have control over what is posted and when to post it. The posting takes place only after you check the **"Include unit on web site"** checkbox in the Lightspeed unit record. You should always create the unit entries in Lightspeed and then post them to the website. Unit entries created on the website using the ARI Command Center do not make a unit entry in Lightspeed.

Existing Units: Note that for any existing units posted prior to this integration you will need to click the **Link Web Product** button on the *Website* tab in the unit record to create the web link, and then check the **"Include unit on web site"** checkbox.

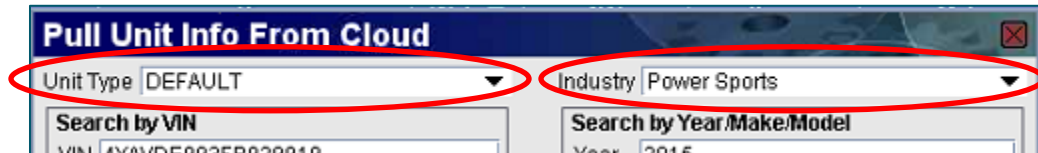
This applies to all units that are already in your inventory, even if you have already listed them directly on the ARI website prior to this release.

If you had manually entered them on the ARI site rather than using the old feed through the command center you will need to delete the manual entries and then create the new links. See the **"Linking Existing or Manual Entry Units to the Website"** topic on page 3.

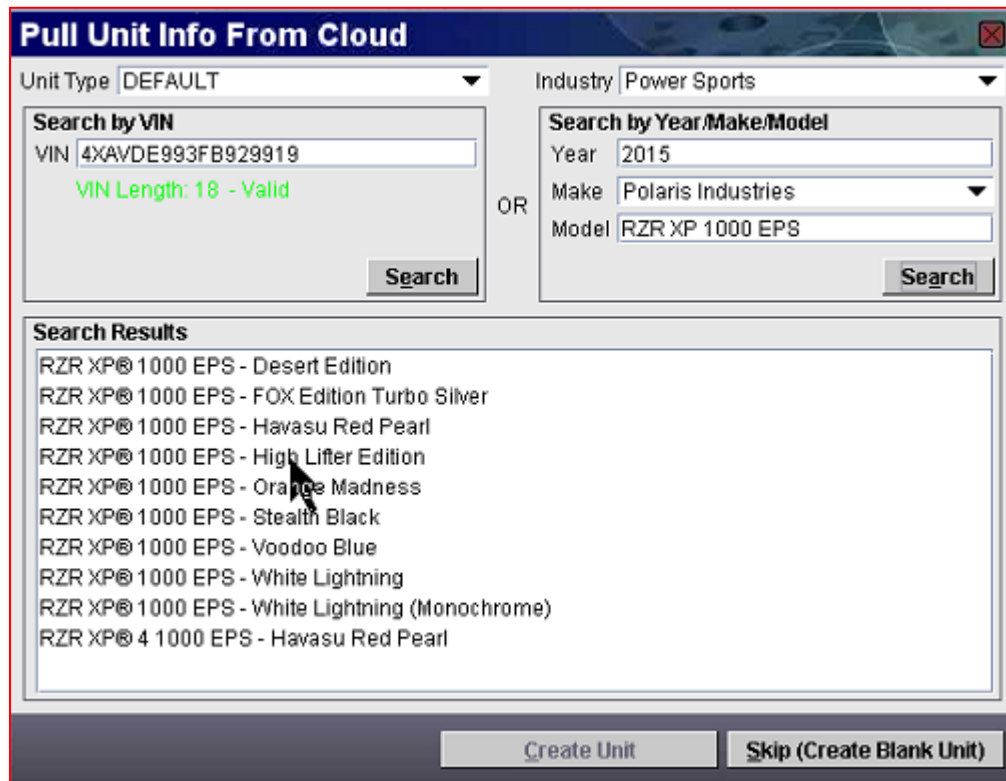
Creating the Inventory Record

When website integration is in place the process for creating a major unit inventory record in Lightspeed is expedited by the availability of VIN (for Powersports industry) or Year, Make, Model search.

1. Go to the **Sales – Major Unit Inventory** in Lightspeed to display your unit list.
2. Click the **New** button at the top of the screen. When ARI integration is active this button opens a “**Pull Unit Info from Cloud**” search dialog where you can enter either the VIN or Year/Make/Model search.
 - a. The search dialog has fields for **Unit Type** and **Industry** at the top. Start by making those selections. Selecting Power Sports enables VIN search as well.



- b. The **Unit Type** dropdown lists the unit types you have defined in Lightspeed. The **Industry** dropdown has the industry types that are recognized by ARI. The first time you make a selection in each field it maps those selections so that the industry selection defaults to the one selected for each of your unit types. If you change the Industry selection for a selected unit type, it will be remembered as the default going forward.
3. If you are entering a Powersports product you can type the **VIN** and click **Search** to find a match. If you are entering a non-Powersports unit such as a boat or RV enter the search parameters in the **Year**, **Make**, and **Model** fields. Then click the **Search** button in that section.



4. Potential matches are listed in the *Search Results* area below. Select the best match and then click the **Create Unit** button to mate the unit you are entering to the available product

information. This populates your Lightspeed unit record with the Year, Make, and Model entries completed on the *General* tab and the information to be posted to the website on the *Website* tab. **Note:** If no match is found click the **Skip (Create Blank Unit)** button.

5. Enter the remaining Unit information into the Lightspeed unit record as needed.
6. If you want the unit listed in your available inventory on the website, go to the **Website** tab. Review the information there and edit if needed. Then check the **Include Unit on Website** checkbox. For more detail search Service Connect for the “*Major Unit Inventory - Website Tab*” help topic.

Linking Existing or Manual Entry Units to the Website

If you were using the old technology to post a unit that fed from Lightspeed to the ARI Command center to update your Lightspeed unit inventory, then the units on the website have the Major Unit ID from EVO or NXT and can be overridden and linked using the current integration if you desire. To override the units:

1. In the Lightspeed unit record go to the **Websites** tab.
2. Click the **Link Web Product** button, enter the year, make, and model, and then click **Search**. Highlight the unit and click the **Link Product** button to link the unit to the correct ARI model skeleton. Then check the **Include Unit on Web Site** checkbox.

It will find the same major unit that has already been posted and give you two options. You can override the unit, which will take the previous unit off the website and add the unit info from EVO, or you can cancel and keep the previous unit entry on the website. Overriding the unit already on the website will delete any custom images and descriptions you may have posted previously.

If you had formerly created units directly on the website from the ARI command center then there is no linking capability. You would have to delete all the manually created units off the website, and then re-post them from EVO.

ARI Website Integration for Visibilities

“Visibilities” refers to where the unit is featured on your website or on 3rd-party channels you have included with your ARI services. The integration with ARI in Lightspeed now lets you make your Visibilities selections for each unit within the unit record.

To Make Visibility Selections

If you have checked the *Include Unit on Website* box, the unit can be viewed in your website inventory list. To enable viewing in a product group or showroom on your website or on a third party sales channel you need to check the box in the Visibilities section for the selection.

1. In Lightspeed go to the **Sales – Major Unit Inventory** menu.
2. Select the unit you wish to feature and double-click to open the unit detail record.
3. In the unit detail record, go to the **Website** tab.
4. Make sure the *Include Unit on Website* box is checked. Then in the *Visibilities* list at the lower right, check all of the selections where you want the unit to be available.
5. Click **Save** when completed.

ARI Website Integration for Images

Image Selection: When a unit is linked to the website there is also an **Images** button next to the Link button in your Lightspeed unit record website tab. This button brings up a dialog showing the images that are available on the website.

The available images include stock photos and your own custom images (see below). By default all of them are set to display. Click the red X if you do not want an image to display. Images with the X in the corner are displayed. Images with a green arrow in the box are available to display but not currently selected.

Custom Images: You can also use the ARI App to select a unit on the website and take a picture to post to the website. Those pictures are then also available to select or deselect in the ARI images window accessed from the Lightspeed unit record Websites tab.

